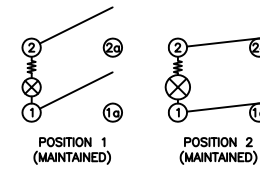


SCHEMATIC



SPECIFICATIONS

FUNCTION:
2P1T OFF-ON

RATINGS:
10A 125VAC [UR, cUR]
EN 61058-1:2002:
6(2)A 250V~ μ 1E4 T125/55 [ENEC14]

ILLUMINATION VOLTAGE:
250V

CONTACT RESISTANCE:
Initial: 35mΩ Max. at 50VAC

INSULATION RESISTANCE:
500MΩ Min. at 500VDC

DIELECTRIC STRENGTH:
1,000VAC For 1 Minute

ELECTRICAL LIFE:
6,000 Cycles [UR, cUR]
10,000 Cycles [ENEC14, SEMKO]

TEMPERATURE:
Operating: -20°C to 85°C [UR, cUR]

VALS:



COLORS AND MARKINGS

BODY:
Black

ACTUATOR:
Transparent Green

MARKINGS:
O Showing When Off (8)

MARKING COLOR:
Black

MATERIALS

BODY:
Polyamide 6/6 (PA66), UL94 V-2

ACTUATOR:
Polycarbonate (PC), UL94 V-2

LAMP:
Neon Bulb

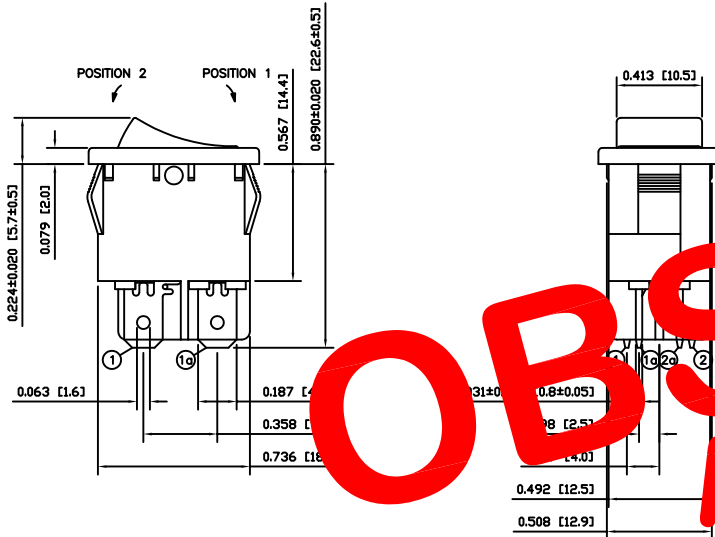
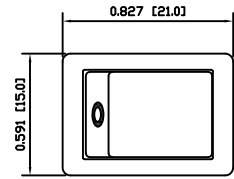
RESISTOR:
Carbon Film Resistor

MOBILE CONTACT:
Silver Plated Copper

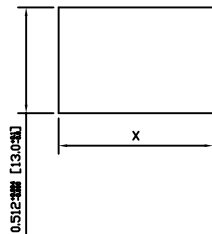
CONTACTS:
Silver Alloy

TERMINALS:
Silver Plated Copper
Silver Plated Brass

OBSOLETE
 April 2018
 PCR 23331



SUGGESTED PANEL CUTOUT



PANEL THICKNESS	X
0.030~0.049 [0.75~1.25]	0.756 [19.2]
0.049~0.079 [1.25~2.00]	0.764 [19.4]
0.079~0.118 [2.00~3.00]	0.772 [19.6]

ACTUATOR	A	09/07/30	CAB
BODY	A	09/07/30	CAB
COLORS	A	09/08/18	CAB
MATERIALS	A	09/07/30	CAB
SPECIFICATIONS	A	09/07/30	CAB
REFERENCE	REV.	DATE	BY

THE INFORMATION CONTAINED IN THIS DOCUMENT IS PROPRIETARY TO E-SWITCH-LAMB INDUSTRIES AND IS NOT TO BE COPIED OR TRANSFERRED

REV.	DESCRIPTION	DATE	BY
C	CORRECT MARKING COLOR FROM WHITE TO BLACK	10/8/2015	MW
B	CORRECTED BULB TYPE	09/12/09	CAB
A	INITIAL RELEASE	09/09/23	CAB

DIMENSIONS	
INCHES [MILLIMETERS]	
GENERAL TOLERANCES	±0.008 [±0.2] / ±1'
SCALE	DRAWING NOT TO SCALE

RA81231018-137

DRAWING NUMBER	DATE	REVISION
38-RA81231018137	DECEMBER 9, 2009	C